

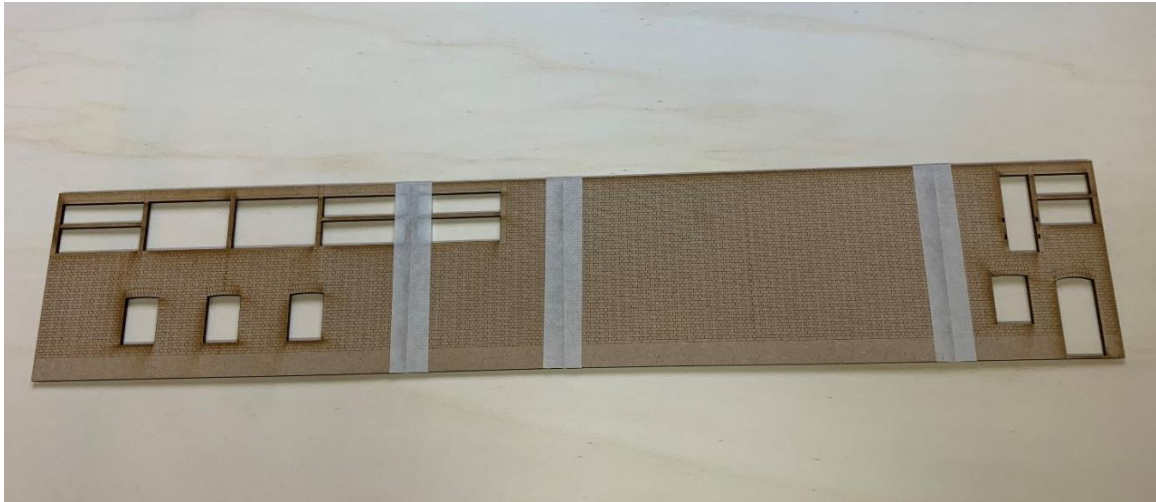
MONK'S GATE MODELS

www.monksgate.co.uk

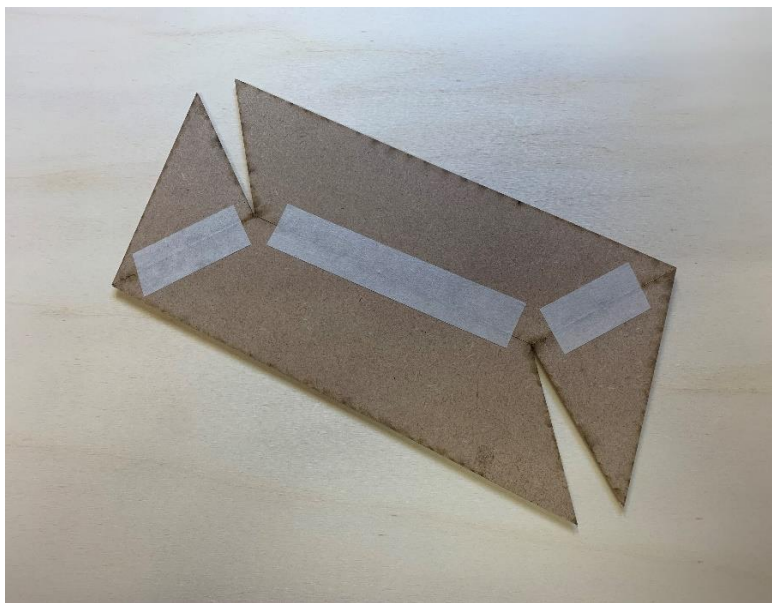
GWR 'SILVERTON' SIGNAL BOX 7mm ASSEMBLY INSTRUCTIONS

Warning: This kit is intended for those with a modicum of modelling experience and is not suitable for children due to small parts, the use of hazardous adhesives and sharp blades.

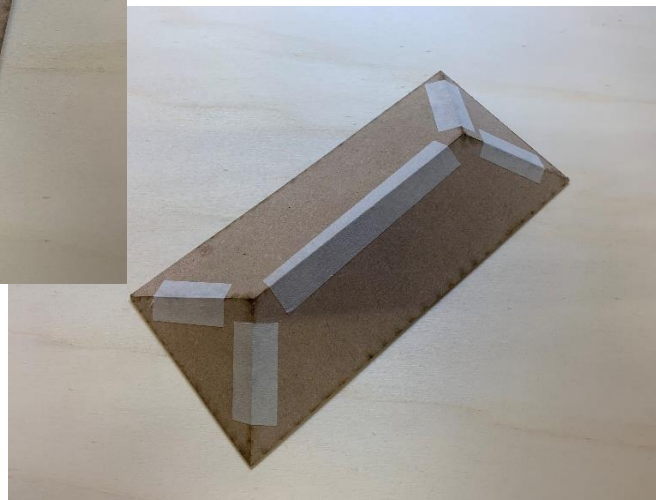
Please read through these instructions before starting construction.



Begin by making up the four sides of the building. These are pre-mitred and are best assembled by laying face up on a flat surface and accurately butting together, making sure the brick courses line up. Secure with masking tape and fold up into a rectangle, then run superglue into the joins. Don't over-do the glue as it may seep through the masking tape. Set aside to dry ensuring it is square. Remove the tape as soon as it is safe to do so. The horizontal members through the window apertures are to maintain rigidity during assembly and should be cut away once the walls are together.

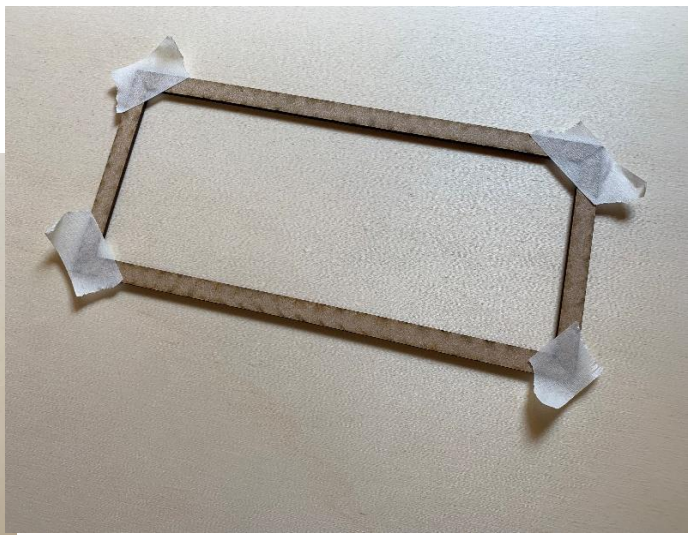
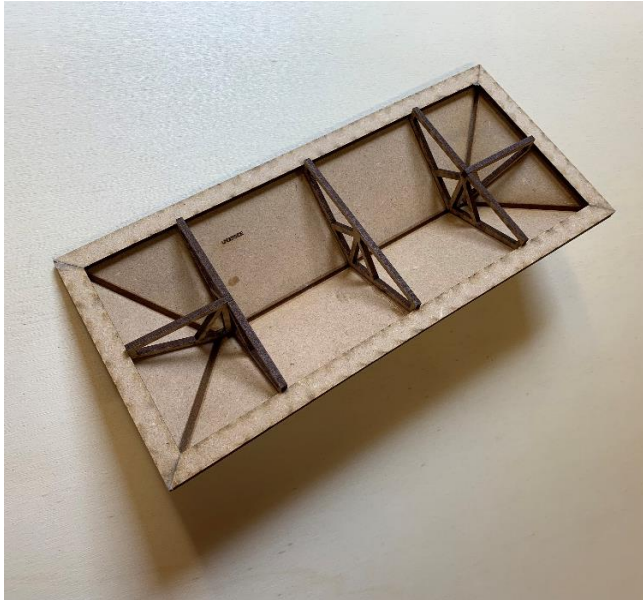


Next, make up the roof. This is assembled in the same way as the walls, by butting together, securing with masking tape and folding up.



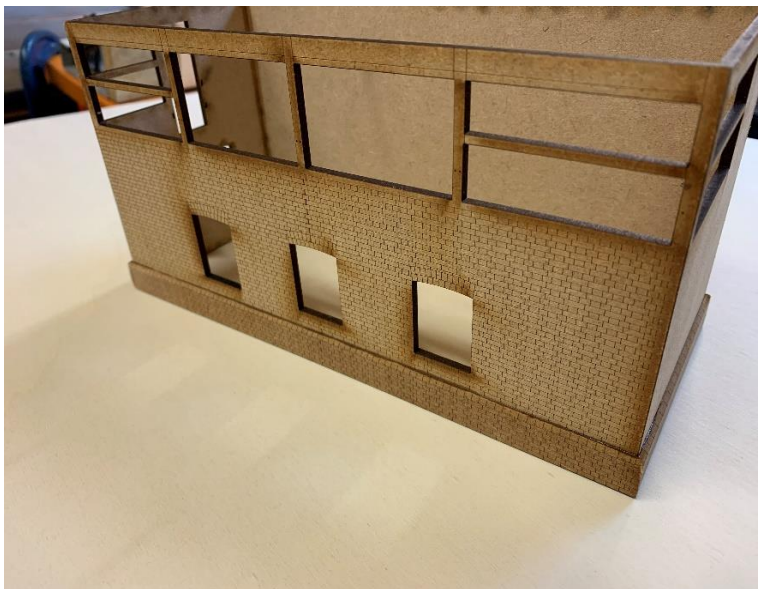
Once dry, the bottom chamfered edge will need sanding to produce a flat surface.

Take the four narrow strips of 3mm MDF and glue them together thus, ensuring they are flat. Set aside to dry.



Take the roof beams and glue them to the underside of the roof structure. There are scribed lines on the roof to aid accurate location. The previously assembled four

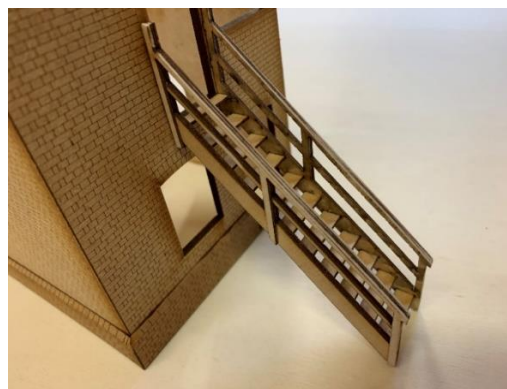
narrow pieces of MDF can then be glued onto the assembly as shown. This will form the underside of the roof, and provide a surface for fixing gutters to should you wish.

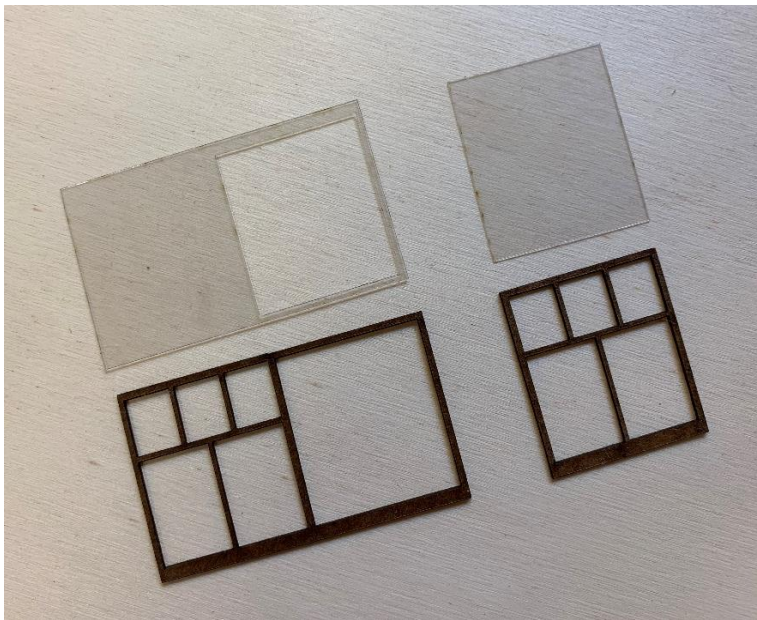


Next, identify the four pieces of plinth brickwork. These are pre-chamfered and mitred. It may be best to fit the ends first and then the back and front.



The eaves brackets can also be fitted into the slots. Make up the staircase. It is best to first assemble the main strings and handrails for each side by laminating the three layers together. Then assemble the staircase treads in their slots but without glue. Note there is one tread which is narrower which goes on the top step. Once assembled dry (three hands are useful!), place upside down in a vice, check all is square and parallel and drop superglue on each tread slot. Leave to dry before removing from the vice.





The window frames are formed from self-adhesive frames and clear acetate glazing. The frames should be painted prior to glazing. I have found a couple of coats of cellulose white primer from a rattle can to be most effective. Allow the paint to fully cure overnight as the paint can soften the adhesive.

Once fully dry, peel off the release paper and stick on the glazing.

A pair of windows as in this photo can be assembled either open or

closed. Do not use superglue to glue the windows together as this will render the acrylic cloudy. Use 'cock-pit' glue or similar. You may find it best to put the windows aside until the main framework is painted. When you do come to fit them, they may need gently sanding as they are a snug fit and a little too much paint on the main frames can make a difference.

NB. If you have purchased the internal detailing kit, you may want to spray the internal window frames too at this stage, and assemble them to the respective external window before fitting into the main walls.

Next make up and fit the doors as shown.

Holes are pre-drilled to mark positions of window guard rails.



On the top ridge of the roof, mark 25mm in from both ends and drill 4mm diameter holes to take the 3D printed roof vents. These should leave about 11mm of shank protruding. At the ends of the ridge, drill 2mm diameter holes and insert the 3D printed finials down to the depth stops.



Next take the slate strips and slate the roof. Make sure the rows are straight and that they overlap correctly from one row to the next. Slate an entire slope before trimming at the hips and moving onto the next slope. Finish off the hips by fitting the paper strip to represent lead flashing.



You may wish to add guttering and downpipes. I would recommend Modelu for accurate 3D printed parts. Monk's Gate Modes have no commercial connection with Modelu.

NB1. The illustrations above are all shown unpainted but I highly recommend painting the model during the various stages of construction. Eg, paint the brickwork and external timber before adding the doors and windows; simily, paint the staircase before fitting.

NB2. If you have purchased the internal detailing kit, read its instructions in conjunction with these, particularly regarding fitting the windows.

NB3. Please note no internal details are included in this kit. A separate kit is available which includes floor, wall cladding, vestibule and internal window frames.

Prototype painting details for the period 1912-1947 and information can be found in 'Great Western Structure Colours' by Richard North.

Several parts are small and delicate and easily lost or broken. If you require replacements then simply identify the part by emailing a photo of it to me and send me a stamped, addressed envelope and I will post a replacement free of charge.

As some of the photos are difficult to reproduce in print, these instructions are available as a PDF upon request.

If you require further assistance in any way, please do not hesitate to contact me at:
monksgate1907@gmail.com

© Monk's Gate Models 2023



