

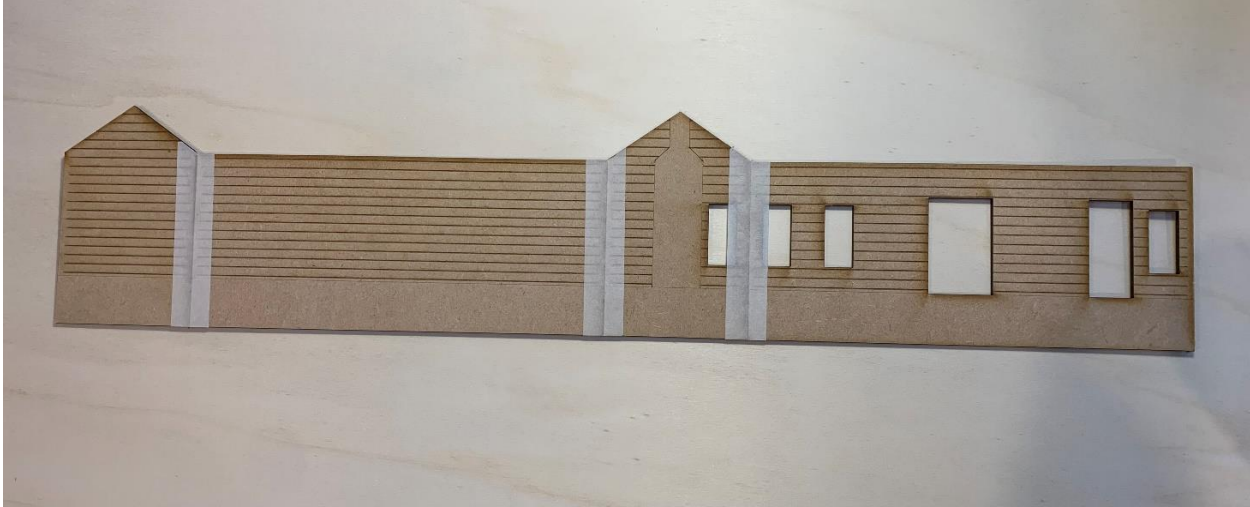
# MONK'S GATE MODELS

[www.monksgate.co.uk](http://www.monksgate.co.uk)

## GWR 'SILVERTON' WAITING ROOM 7mm ASSEMBLY INSTRUCTIONS

Warning: This kit is intended for those with a modicum of modelling experience and is not suitable for children due to small parts, the use of hazardous adhesives and sharp blades.

**Please read through these instructions before starting construction.**



Begin by making up the four sides of the building. These are pre-mitred and are best assembled by laying face up on a flat surface and accurately butting together, making sure they line up. Secure with masking tape and fold up into a rectangle, then run superglue into the joins. Don't over-do the glue as it may seep through the masking tape. Include the ceiling and triangular roof supports in the glueing process.

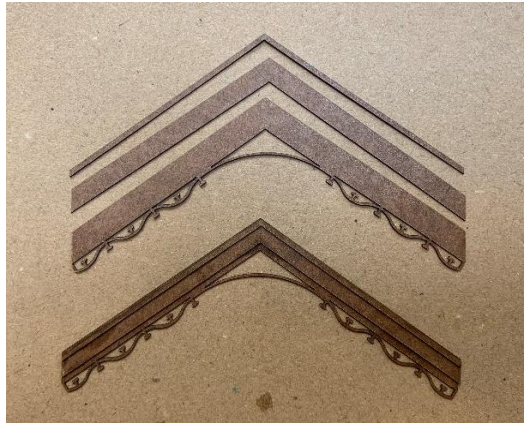


Add the two roof sections. These are pre-mitred and also have lines scored on them to aid sticking the slates down in due course. Ensure the overhang is equal at both ends.

Add the corner pieces. Note these are two different widths. Add the narrow one flush with the wall corner and then the wider piece flush with the first piece. Once fitted they will require trimming to the roof line.

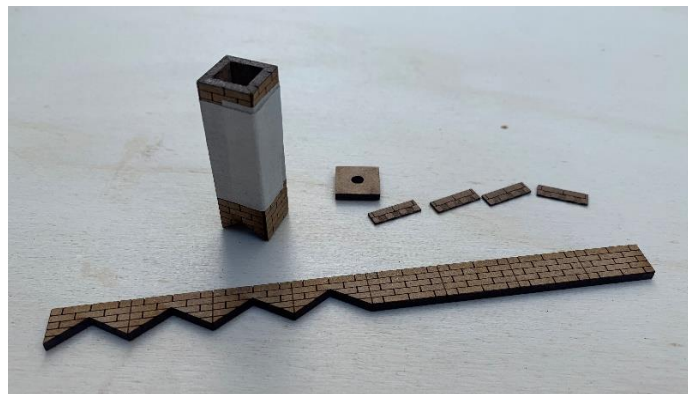


The barge boards can be laminated together and put to one side until the roof is slated.



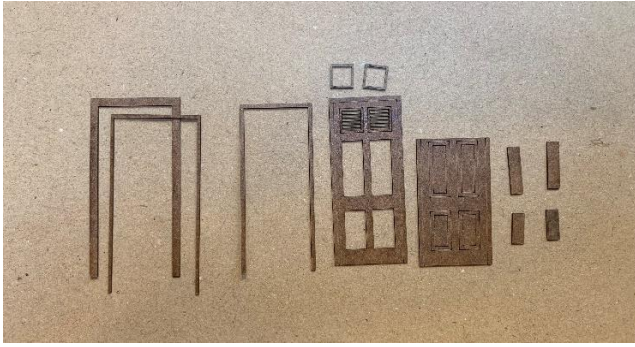
I have provided short sections of valance which fit behind the barge boards and are evident in photos of the prototype. They will need trimming to the roof profile. The strip of hardwood can be fixed to the wall between the two pieces of valance to act as a barge board.

Next, make up the two chimney stacks. These are made up with masking tape in the same fashion as the walls. Then the plinth brick courses can be added. These will need separating into individual pieces which are over-length, and each face can be fixed and then trimmed flush before adding the other face. Also add the detail brick courses to the top, add the square top piece with a hole to receive the chimney pot. The base of the stack will need trimming to sit flush on the roof.

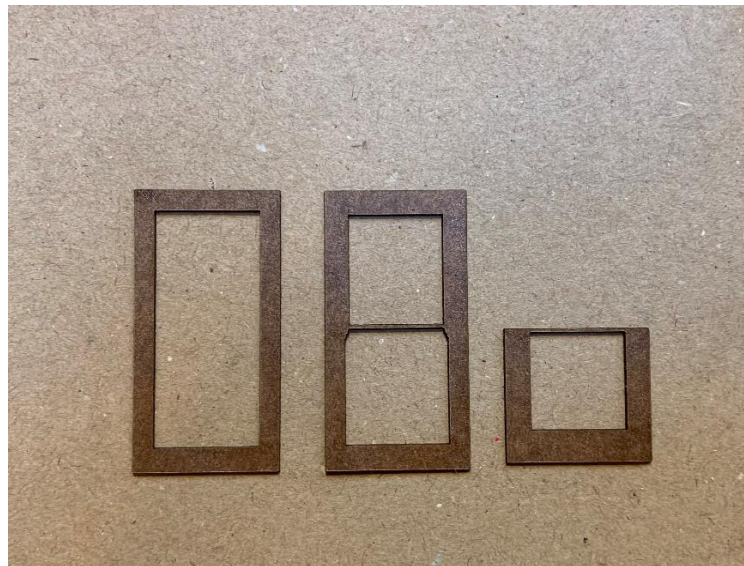
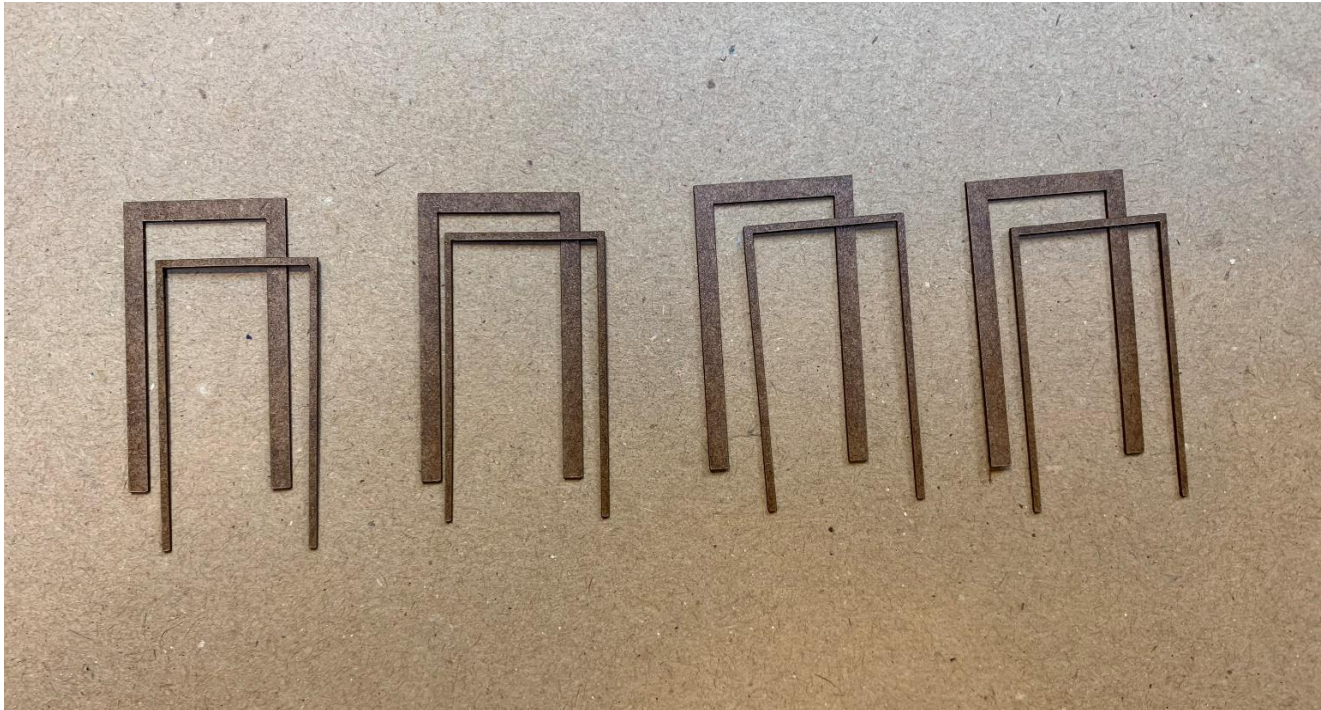




The doors are made up from multiple laminations as shown in these photos. Identify and lay out the parts. The two larger outer frames for each doorway fit to the walls. You may wish to paint the parts first if a two-colour scheme is being used.



The outer frames for the windows are also made up from two layers.



The window frames are formed from self-adhesive frames and clear acetate glazing. The frames should be painted prior to glazing. I have found a couple of coats of cellulose white primer from a rattle can to be most effective. Allow the paint to fully cure overnight as the paint can soften the adhesive.

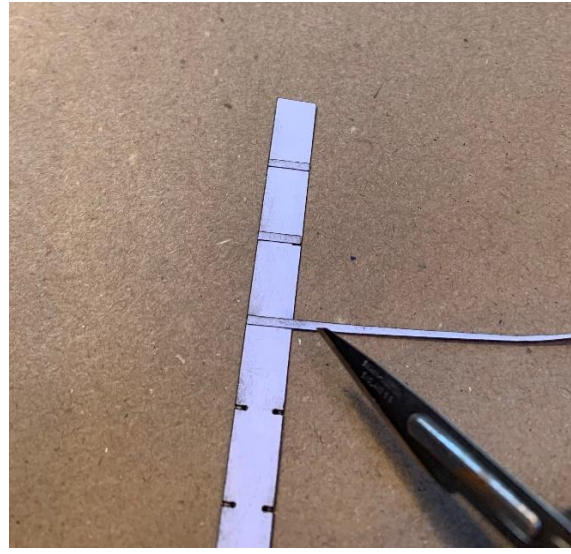
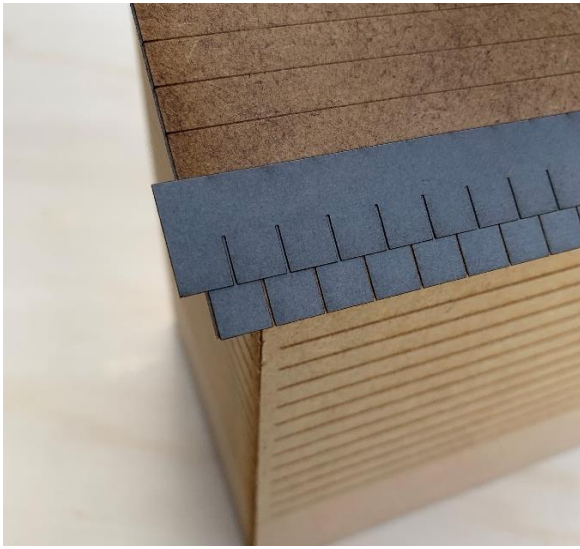
Once fully dry, peel off the release paper and stick on the glazing. A pair of windows as in this photo can be assembled either open or

closed. Do not use superglue to glue the windows together as this will render the acrylic cloudy. Use 'cock-pit' glue or similar. You may find it best to put the windows aside until the main framework is painted.



Next take the slate strips and slate the roof. Make sure the rows are straight and that they overlap correctly from one row to the next. Slate an entire slope before trimming at the ends and ridge before moving on to the other slope.

The ridge tiles are made using the paper strip with lines engraved at intervals. Cut thin strips of paper and glue on these lines to represent individual ridge tiles.



Cut away sections of slates where the chimney stacks go, fit the stacks and cut the ridge tile strip to length and add between the stacks. Dress the bases of the stacks with paper strip lead flashing (6mm wide paper strip).

Add the barge boards to each end. You will need to cut away sections from the top two layers to receive the 3D printed finials. Please note these are very fragile and a couple of spares are included in case of mishaps!

You may wish to add guttering and downpipes. I would recommend Modelu for accurate 3D printed parts. Monk's Gate Models have no commercial connection with Modelu.

NB1. The illustrations above are all shown unpainted but I highly recommend painting the model during the various stages of construction. Eg, paint the external timber before adding the brickwork, doors and windows. Similarly, you may wish to paint the light and dark stone parts of the doors separately before assembly.

NB2. Signage is available separately on request.

NB3. The toilet block in the illustrations is from Skytrex. Monk's Gate Models has no commercial connection with Skytrex.

Prototype painting details for the period 1912-1947 and other information can be found in 'Great Western Structure Colours' by Richard North.

Several parts are small and delicate and easily lost or broken. If you require replacements then simply identify the part by emailing a photo of it to me and send me a stamped, addressed envelope and I will post a replacement free of charge.

As some of the photos are difficult to reproduce in print, these instructions are available as a PDF upon request.

If you require further assistance in any way, please do not hesitate to contact me at:  
[monksgate1907@gmail.com](mailto:monksgate1907@gmail.com)

© Monk's Gate Models 2023

