

# MONK'S GATE MODELS

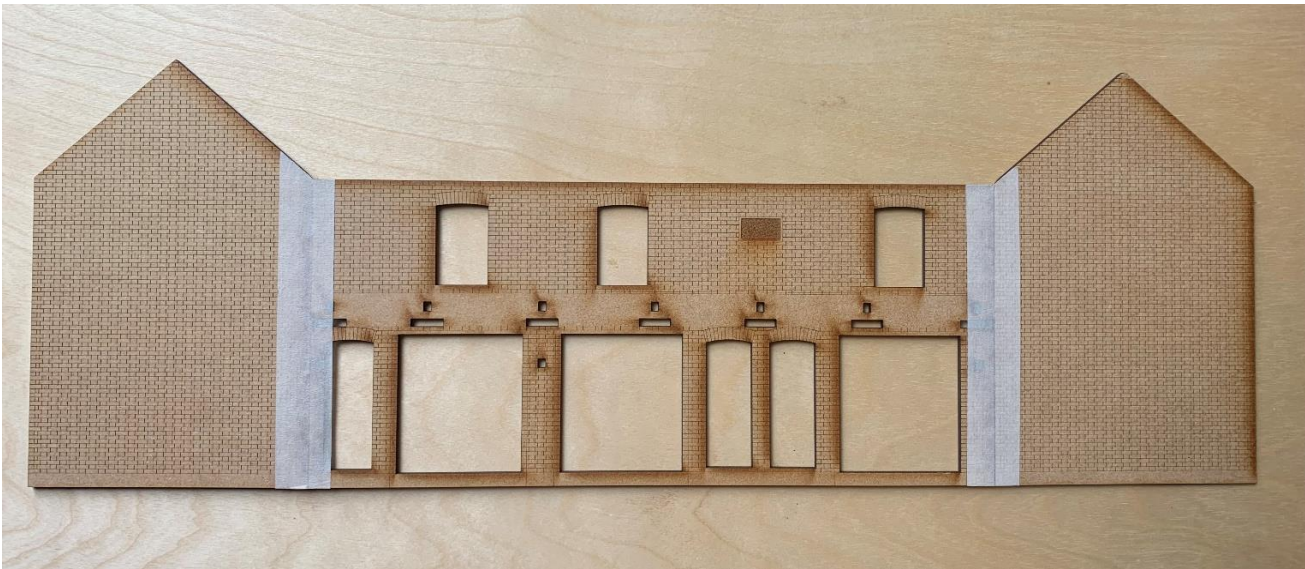
[www.monksgate.co.uk](http://www.monksgate.co.uk)

## TERRACE HOUSES 4mm ASSEMBLY INSTRUCTIONS

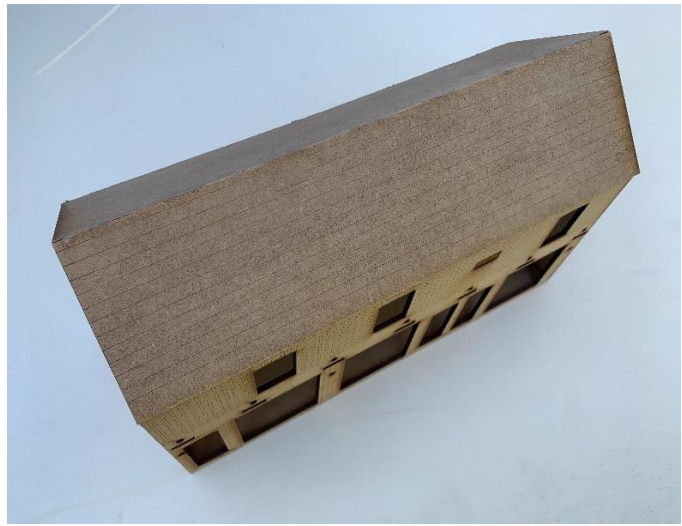
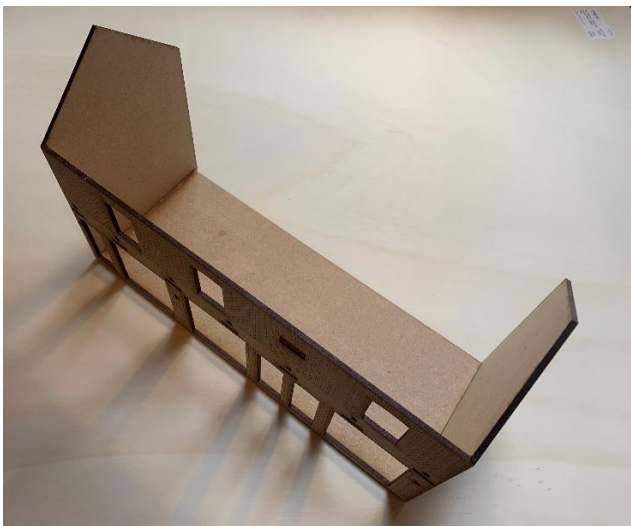
Warning: This kit is intended for those with a modicum of modelling experience and is not suitable for children due to small parts, the use of hazardous adhesives and sharp blades.

**Please read through these instructions before starting construction.**

**Please note these photos are of the 7mm version but construction is identical.**

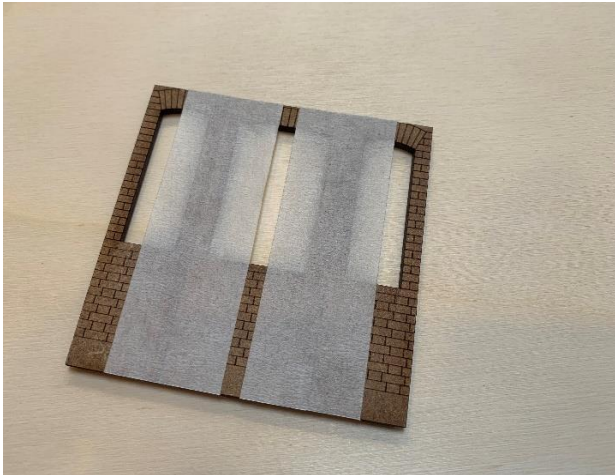


Begin by making up the three sides of the building. These are pre-mitred and are best assembled by laying face up on a flat surface and accurately butting together, making sure they line up. Secure with masking tape and fold up. You will find that including the floor in the glue-up will aid keeping it all square. Run superglue into the joins. Don't overdo the glue as it may seep through the masking tape. Add the thin strips cut to length to act as window sills.



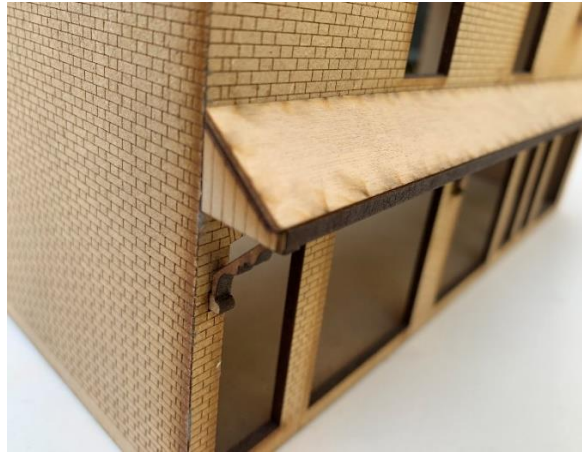
Add the two roof sections. The wider scored line goes at the gutter line and is an aid to getting the slate strips correctly stuck aligned. Whilst the model is intended to be three-sided, I have included a piece of MDF to close off the rear elevation should you wish to do so. This should be fitted last.

Next, make up the bay windows. These are formed of three pieces. The outer pieces of wall are handed, and make sure the mitre is on the outside, not butting up to the centre piece. Set aside to dry, making sure the overall width of the bay matches the scored lines on the main wall.

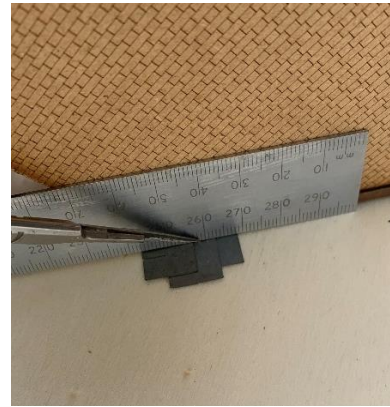


You may wish to leave fixing these to the main walls until the windows are made and painted.

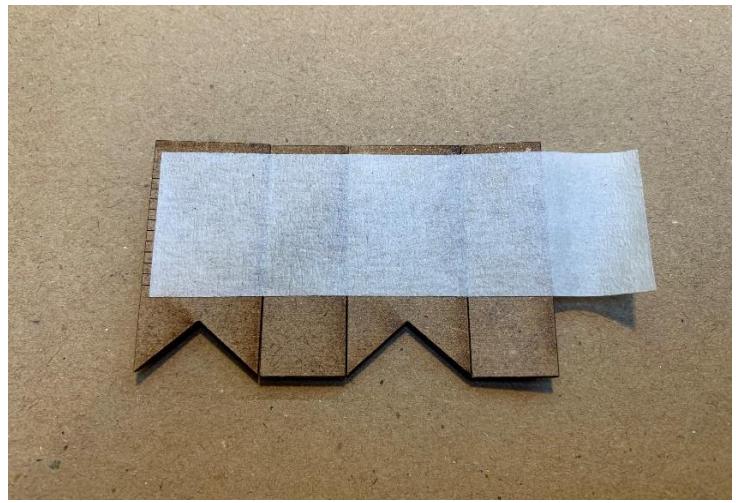
Fit the porch roof section and secure with 7 triangular brackets. The score lines are facing downwards. Fit the 3 brackets by slotting into the hole in the roof section first and then gently springing into the hole in the wall. Fit the sloping roof and triangular end pieces.



Next, slate the roof slopes. On the porch slope, lay the first strip with an overhang for the gutter along the bottom edge, and an overhang on the end which can be trimmed back to within about 1mm of the edge. The main slopes are slated using the scored lines on the MDF. Note the ends have a generous overhang as the barge boards and fascias are fitted once the slates are complete and then trimmed back using, for example, a steel rule as a guide to get a straight edge of cut slates.

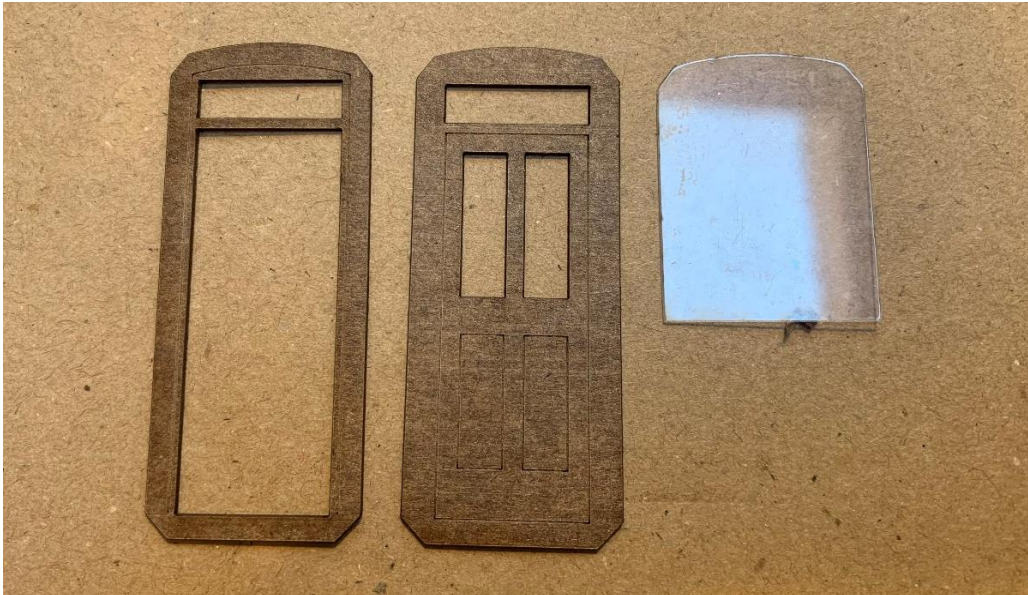


Next, make up the two chimney stacks. These are made up with masking tape in the same fashion as the walls. Then the brick detail courses can be added.

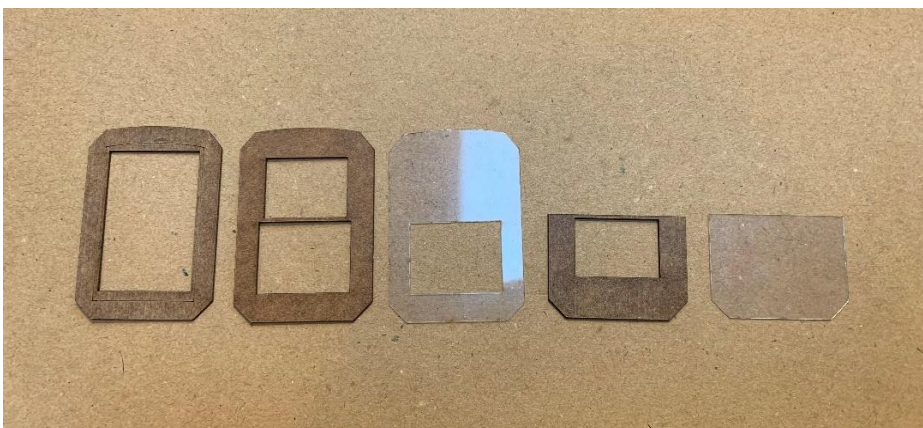


Add the rectangular piece to the top with two holes to receive the 3D printed pots. The rectangular piece can be sanded to smooth out the sharp edges, like mortar haunching. The base of the stack will need trimming to sit flush on the roof. Glue it down ensuring it is upright and square to the roof.

The doors are made up from multiple laminations as shown in these photos. Identify and lay out the parts as shown. You may wish to paint these before assembly. All parts (apart from glazing) are self adhesive.



Similarly, identify and lay out the parts for the three upper windows. Again, you may wish to paint these before assembly.



Lastly, identify and lay out the parts for the bay windows. Note the outer sashes are handed with the thinner section facing outwards. Some trimming may be required to get them to sit flush and in line within the bay brickwork. You may wish to paint before assembly.



Do not use superglue to glue the windows together as this will render the acrylic cloudy. Use 'cock-pit' glue or similar.

Make up and fit the porch support from the small block of hardwood, which should be wrapped with the self adhesive engraved brick paper. There is also a small rectangle of 2mm MDF which sits on top and then the 2mm MDF post with shaped top.

Once the brickwork is completely painted, pointed and weathered, fit the pre-painted windows on to the reverse of the bay window brickwork and fix the assembly on to the main building. Some trimming may be required to ensure the windows fit snugly. Similarly fit the upper windows and doors.

Paper self-adhesive strip is provided for lead flashing around the chimney stacks, along the main roof ridge and along the porch. Refer to the photo of the finished model for guidance.

You may wish to add guttering and downpipes. I would recommend Modelu for accurate 3D printed parts. Monk's Gate Models have no commercial connection with Modelu.

Additional kits can be purchased and joined to form a longer row of terraces. In which case, I would recommend building them together as one structure, so creating a continuous roof.

Several parts are small and delicate and easily lost or broken. If you require replacements then simply identify the part by emailing a photo of it to me and send me a stamped, addressed envelope and I will post a replacement free of charge.

As some of the photos are difficult to reproduce in print, these instructions are available as a PDF upon request.

If you require further assistance in any way, please do not hesitate to contact me at:  
[monksgate1907@gmail.com](mailto:monksgate1907@gmail.com)

© Monk's Gate Models 2023



